

# All-In-One Water Boosting Pump

## GRUNDFOS SCALA1

Grundfos SCALA1 is an all-in-one pressure boosting system designed for domestic and light commercial applications. Ideal for water supply from shallow wells (less than 26 ft) and pressure boosting from city mains, SCALA1 can also pump from a roof tank, break tank or ground tank.

With Bluetooth-enabled connectivity, you can monitor, troubleshoot, and control SCALA1 from your smartphone. Download the Grundfos GO app to any device with an iOS or Android operating system.

Save time with installation with an easy 3-step process. Connect the pipes, prime the pump and plug it in. For a fast setup, configure the pump from the pump control panel. For advanced settings, use the Grundfos GO app and follow the guided online configuration.

Built-in multi-pump/booster technology enables twin pump connection with joint pump control in either duty/assist or duty/standby mode.



### KEY FEATURES AND BENEFITS

- Complete all-in-one unit
- Easy twin pump control
- Bluetooth-enabled connectivity
- Easy 3-step installation
- User-friendly
- Low noise: As quiet as a modern dishwasher (55 dB(A) in typical use)
- Quality-tested to perfection, maintenance-free
- Highly efficient water cooled motor
- Self-priming
- Indoor/Outdoor X4D

### BOOSTING APPLICATIONS

- From mains: increases the water pressure delivered by city mains
- From tanks: increases water pressure from roof tanks, break tanks and ground tanks, including rainwater tanks
- From wells: pumps water from a depth of up to 26 ft (8m)

**TECHNICAL DATA**

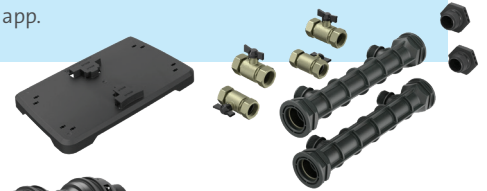
	SCALA1 3-45	SCALA1 5-55
<b>AMBIENT TEMPERATURE:</b>	max. 131°F (55°C)	
<b>LIQUID TEMPERATURE:</b>	max. 113°F (45°C)	
<b>SYSTEM PRESSURE:</b>	max. 115 psi (8 bar)	
<b>INLET PRESSURE:</b>	max. 43 psi (3 bar)	max. 29 psi (2 bar)
<b>HEAD:</b>	max. 150 ft (45 m)	max. 182 ft (55 m)
<b>NOMINAL HEAD:</b>	82 ft (25 m)	82 ft (25 m)
<b>NOMINAL FLOW:</b>	15.8 US gpm (3.6 m <sup>3</sup> /h)	23.3 US gpm (5.3 m <sup>3</sup> /h)
<b>IP RATING:</b>	X4D (outdoor use ready)	
<b>PUMPED LIQUID:</b>	Clean water	
<b>NOISE LEVEL:</b>	<55 dB(A)	
<b>NET WEIGHT:</b>	26.5 lbs. (12.0 kg)	30.9 lbs. (14.0 kg)
<b>SUCTION CAPABILITY:</b>	max. 26 ft (max 8m)	

**PRODUCT OFFERING**

SCALA1 Pump Models	
<b>99631742</b>	SCALA1 3-45 1x115V 60Hz NEMA 5-15 CSA
<b>99631736</b>	SCALA1 3-45 1x230V 60Hz NEMA 6-15 CSA
<b>99631754</b>	SCALA1 5-55 1x115V 60Hz NEMA 5-15 CSA
<b>99631739</b>	SCALA1 5-55 1x230V 60Hz NEMA 6-15 CSA

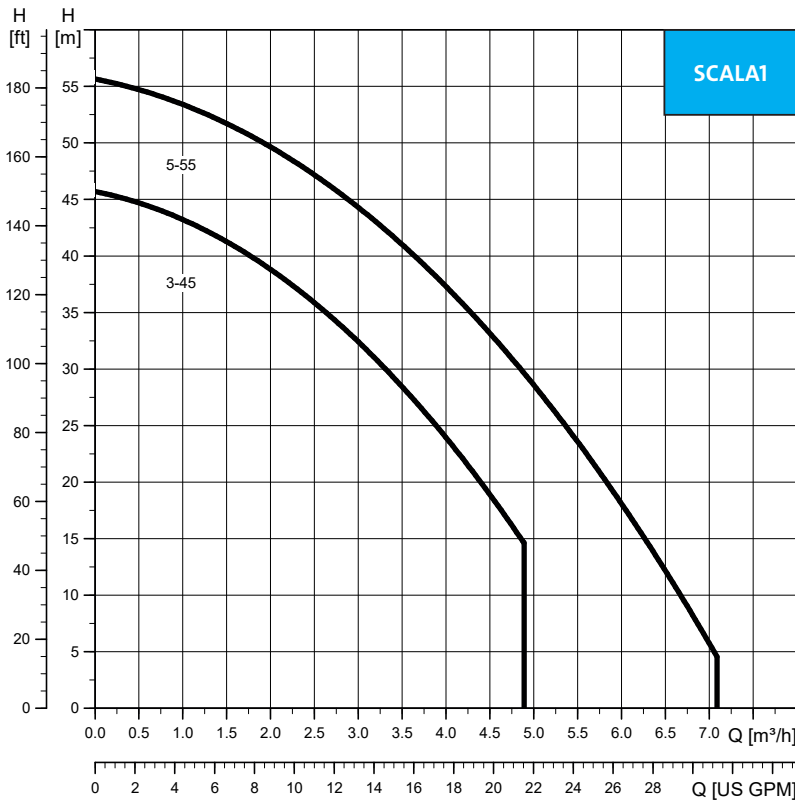
SCALA1 Accessory Kits	
<b>99725185</b>	Inlet Filter, 250 micron, NPT
<b>99725168</b>	SCALA1 Twin Accessories Set, NPT

Need greater flow? A twin pump setup is available with the twin accessories kit that includes baseplate, cable and inlet, and outlet manifolds. Configuration is easy with the Grundfos GO app.



An Inlet Filter can be added to help prevent harmful particles from entering the system.

**PERFORMANCE DATA**



Visit [grundfos.us/pei](http://grundfos.us/pei) to learn more about Department of Energy (DOE) pump energy index (PEI) requirements and PEI ratings on specific Grundfos models.